



PASSERELLE SPOR National Training Entity

Supporting and promoting capacity building efforts in patient-oriented research

PASSERELLE, acting as a network of networks, is a national hub in capacity development dedicated to supporting and promoting the collective efforts to develop and sustain an inclusive and culturally safe capacity in patient-oriented research (POR).

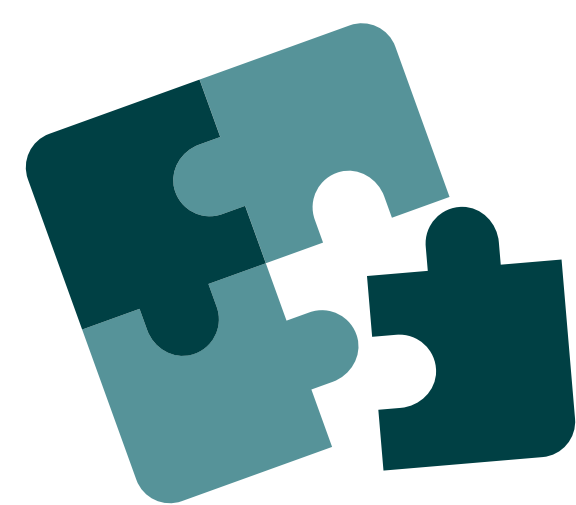
Our mandate

Cultivate an active & engaged POR community

Support & empower trainees to become active POR leaders

Maintain a central body of resources for POR capacity development

What can PASSERELLE do for you?



LEARN

> POR Learning Pathways

Contextualized pathways that provide a comprehensive and engaging learning experience, ensuring that learners access the necessary training, resources, networking and mentoring, and experiential learning most relevant to their field of interests and their level of expertise.

> POR Fundamentals & Curriculum

Access to a POR Fundamentals and topic specific curriculums (e.g., POR methods) that bring together existing trainings and activities from our partners in addition to new, tailored ones.

> POR Self-Directed Learning

Access to a centralized inventory of POR learning activities and a learning platform (RISE) to keep track of activities, earn certifications and badges, and access additional activities across RISE partners.

Make sure to join our collaborative learning platform RISE: my.riselsms.ca



SHARE

> POR Community

Support and facilitate the growth, strengthening, and engagement of an inclusive POR community throughout our activities and services.

> Networking & Mentorship

Facilitate networking between those interested in POR to create new and promising collaborations, as well as unique support for learners who wish to find a POR mentor. All experts, including patients, are invited to contribute to this program and become mentors to share their knowledge, support the next generation, and contribute to the greater POR community.

> POR Conferences & Events

Lead or support members of our POR community or interested organizations in the planning and conduct of patient engagement and POR related conferences, events, and activities.

> POR Tools & Resources Repository

Centralization and access to a wide range of tools and resources for patient engagement and POR, such as guides, planning and evaluation tools, and recorded webinars of best practices.

Be part of our community!

Who is PASSERELLE for?

We welcome any individual and organization eager to learn about and engage in patient-oriented research



Students and fellows



Networks, research centers and healthcare institutions



Healthcare professionals, administrators and policymakers



Patients and public community members



Researchers and academic leaders

Did You Know?

PASSERELLE is a bilingual organization, offering its services in French and English.



EMPOWER

> POR Onboarding Programs

Processes, tips, resources, and activities leading to meaningful POR partnerships and mentorship, appropriate logistics and support, and active communication across teams or organizations.

> POR Scholarships & Fellowships

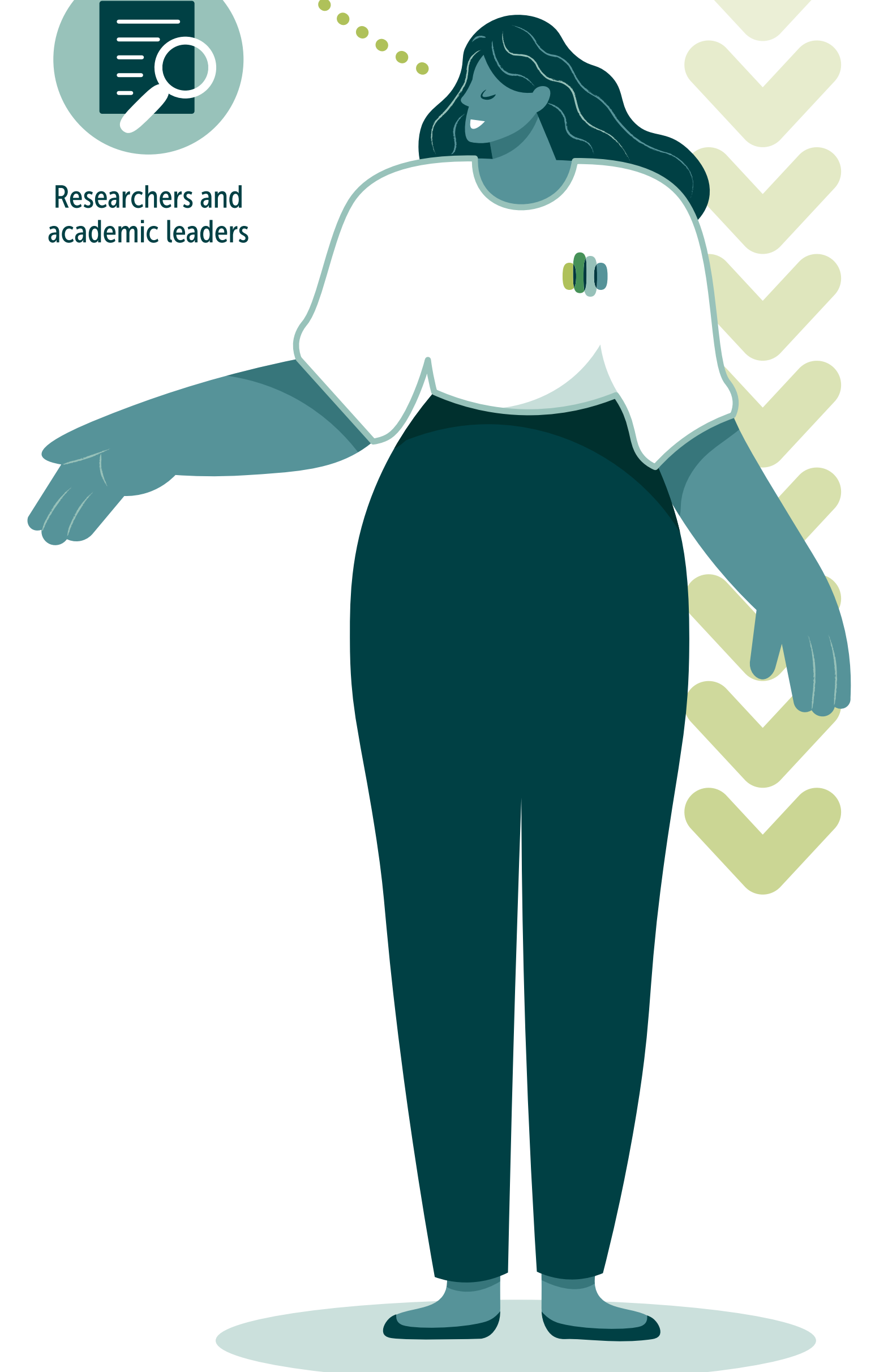
Offer and support, multidisciplinary, and intersectoral POR programs where fellows have access to practical and activities, experiential learning, networking and mentoring, and funding. Facilitate a community of practice across awardees and fellows.

> POR Funding Opportunities

Encourage and facilitate a culture of learning, innovation, and advancement of the science and practice of POR through small seed grant opportunities in collaboration with POR partners.

> POR Consultation & Guidance

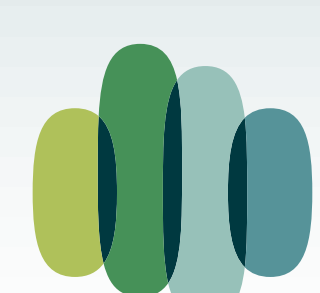
Personalized consultation, co-building of capacity development opportunities, and tailor-made process supporting teams or organizations with the integration of POR principles into their activities and environments.



Subscribe to our newsletter!



Find us on social media and at passerelle-nte.ca



PASSERELLE

National hub in capacity development for patient-oriented research

Pôle national de développement des capacités en recherche axée sur le patient



Canadian Institutes of Health Research
Instituts de recherche en santé du Canada